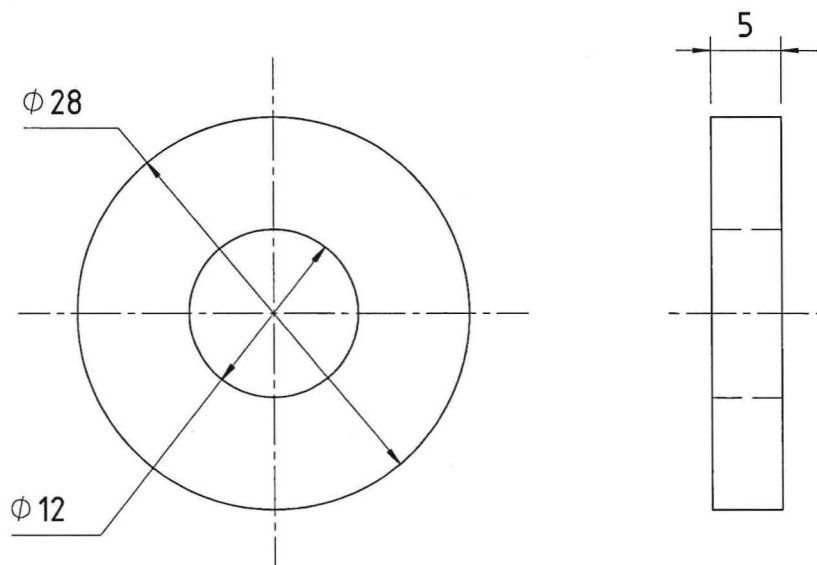


COPY RIGHT & CONFIDENTIAL
THIS DOCUMENT IS THE EXCLUSIVE PROPERTY OF BEML & CONTAINS CONFIDENTIAL
INFORMATION. THIS DOCUMENT OR ITS CONTENTS SHALL NOT BE USED, REPRODUCED OR DISCLOSED IN WHOLE OR IN PART,
WITHOUT PRIOR WRITTEN PERMISSION OF BEML. THIS DOCUMENT & ALL ITS COPIES SHALL BE RETURNED TO BEML ON DEMAND
DRAWING RELEASED FROM PLM, PHYSICAL SIGNATURE NOT REQUIRED

MACHINING DEVIATIONS FOR LINEAR DIMENSIONS	RANGE	0 – 6	6 – 30	30 – 120	120 – 315	315-1000	1000-2000	2000-4000	ABOVE 4000	RA
	TOLERANCE	±0.1	±0.2	±0.3	±0.5	±0.8	±1.2	±2	±3	~
FOR DIMENSIONAL TOLERANCES OF SHEET METAL PARTS AND WELDED STRUCTURES, REFER STD. RD-227										
UNSPECIFIED TOLERANCE FOR LINEAR AND ANGULAR DIMENSIONS REF. IS 2102 (PT-1) (MEDIUM)							QUALITY OF WELD JOINTS REF, RD 230 MEDIUM			
VALUES OF SURFACE TEXTURE SHALL BE AS PER COMPANY STD DS. 1012.C.							STATUS:	MOCKUP/PROTO/PRODUCTION		
WELDING SHALL BE CARRIED OUT AS PER IS: 9595-96										



UN CONTROLLED COPY

NOTE:-

PARTS SHALL BE ZINC PLATED AS PER SERVICE GRADE NO. 2 OF IS:1573-86 &
CHROMATE PASSIVATED TO COLOUR IRIDESCENT YELLOW.

N1	0.025	N2	0.05	N3	0.1	N4	0.2	N5	0.4	N6	0.8	N7	1.6	N8	3.2	N9	6.3	N10	12.5	N11	25	N12	50																																																																																																																																		
<table><tr><td>SL.No.</td><td>QTY</td><td>C100101005</td><td>PART / STOCK No.</td><td>DESCRIPTION</td><td>SIZE (mm)</td><td>COMPANY STD./I.S</td><td>Wt. (Kg)</td></tr><tr><td colspan="5"></td><td>Ø28X5THK</td><td></td><td></td></tr><tr><td colspan="5"></td><td></td><td>MATERIAL</td><td></td></tr><tr><td colspan="5"></td><td>PRODUCT</td><td colspan="3">BMRCL METRO CARS</td></tr><tr><td colspan="5"></td><td>REF DRG</td><td colspan="3"></td></tr><tr><td colspan="5"></td><td>MATERIAL</td><td colspan="3">IS:2062-06, Gr-E 250A</td></tr><tr><td colspan="5"></td><td>HEAT TREAT.</td><td>APPD</td><td>MS</td><td>21.08.19</td></tr><tr><td colspan="5"></td><td>SURFACE TREAT.</td><td>REVD</td><td>DB</td><td>19.08.19</td></tr><tr><td colspan="5"></td><td>TITLE</td><td>CHKD</td><td>JC</td><td>17.08.19</td></tr><tr><td colspan="5"></td><td colspan="3">ADJUSTING LINER -B,</td><td>DRWN</td><td>ILYAS</td></tr><tr><td colspan="5"></td><td colspan="3">PUCA</td><td>SCALE</td><td>2:1</td><td>SHEET</td><td>1 OF 1</td><td>Wt.(kg)</td><td>0.02</td></tr><tr><td colspan="5"></td><td colspan="3">beml BEML LIMITED</td><td>DRG No.</td><td colspan="3">926-83205</td><td>ALT</td><td>0</td></tr><tr><td colspan="5"></td><td colspan="3"></td><td colspan="3"></td><td colspan="3"></td></tr></table>																								SL.No.	QTY	C100101005	PART / STOCK No.	DESCRIPTION	SIZE (mm)	COMPANY STD./I.S	Wt. (Kg)						Ø28X5THK									MATERIAL							PRODUCT	BMRCL METRO CARS								REF DRG									MATERIAL	IS:2062-06, Gr-E 250A								HEAT TREAT.	APPD	MS	21.08.19						SURFACE TREAT.	REVD	DB	19.08.19						TITLE	CHKD	JC	17.08.19						ADJUSTING LINER -B,			DRWN	ILYAS						PUCA			SCALE	2:1	SHEET	1 OF 1	Wt.(kg)	0.02						beml BEML LIMITED			DRG No.	926-83205			ALT	0														
SL.No.	QTY	C100101005	PART / STOCK No.	DESCRIPTION	SIZE (mm)	COMPANY STD./I.S	Wt. (Kg)																																																																																																																																																		
					Ø28X5THK																																																																																																																																																				
						MATERIAL																																																																																																																																																			
					PRODUCT	BMRCL METRO CARS																																																																																																																																																			
					REF DRG																																																																																																																																																				
					MATERIAL	IS:2062-06, Gr-E 250A																																																																																																																																																			
					HEAT TREAT.	APPD	MS	21.08.19																																																																																																																																																	
					SURFACE TREAT.	REVD	DB	19.08.19																																																																																																																																																	
					TITLE	CHKD	JC	17.08.19																																																																																																																																																	
					ADJUSTING LINER -B,			DRWN	ILYAS																																																																																																																																																
					PUCA			SCALE	2:1	SHEET	1 OF 1	Wt.(kg)	0.02																																																																																																																																												
					beml BEML LIMITED			DRG No.	926-83205			ALT	0																																																																																																																																												
GRADE No.	VALUE	SYMBOL	ALT.No.	ECN NO/CHANGES	DATE	BY	CHKD	APPD																																																																																																																																																	
SURFACE ROUGHNESS																																																																																																																																																									